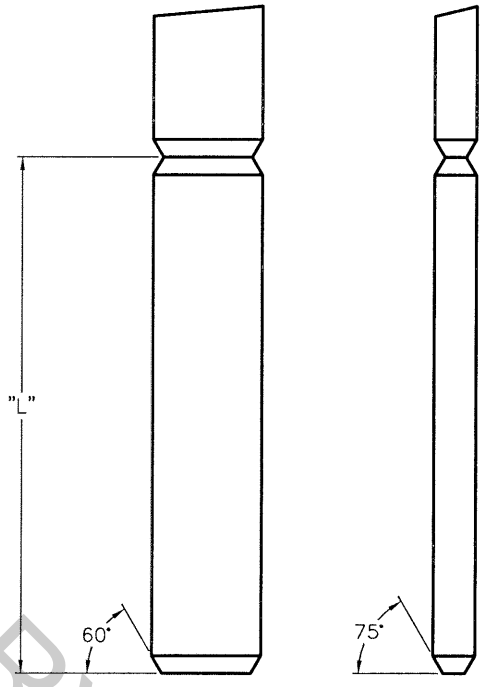
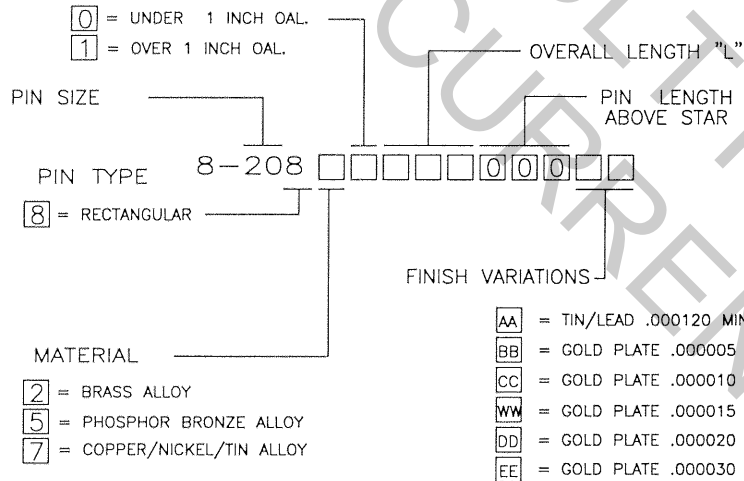


NOTE: UNLESS OTHERWISE SPECIFIED

1. INTERPRET DRAWING IN ACCORDANCE WITH ANSI Y14.5-1982.
2. REMOVED
3. REMOVED.
4. PART TO BE SUPPLIED ON A CONTINUOUS REEL. ONE BREAK, NO SPLICE PER REEL.
5. ALL DIMENSIONS APPLY AFTER PLATING.

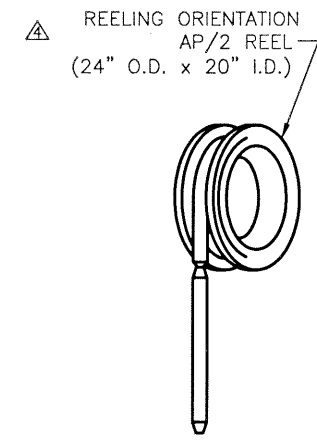
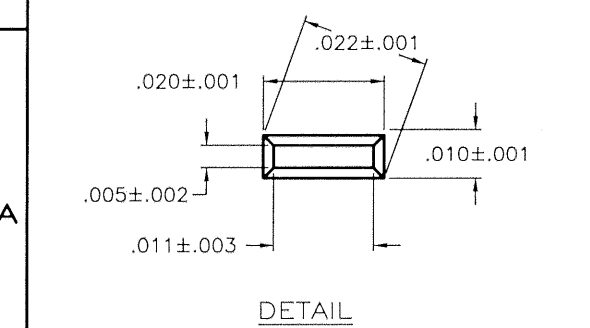
REV	REVISION RECORD	ECN	BY	APPROV	DATE
A	INITIAL RELEASE	14183	MAC	JB	8-29-96
B	75° WAS 30°	14276	JMG	JB	7-21-96
C	PER ECN 14471	14471	MAC	JB	10-18-96
D	CHANGED DIAGONAL FROM .019	15739	MNH	JB	8-29-96

PART NUMBER BREAKDOWN



PIN WITH NO STAR

CUSTOMER DRAWING



<p>ALL DIMENSIONS ARE IN INCHES</p> <p>This drawing and the information set forth herein are the property of Autossplice, Inc. and are to be held in trust and confidence. Publication, duplication, disclosure, or use for any purpose not expressly authorized in writing by Autossplice, Inc. is prohibited.</p>	<p>DECIMAL:</p> <p>XX = ±.01</p> <p>XXX = ±.005</p>	<p>autossplice®</p> <p>AUTOSPSPACE INC.</p> <p>10121 Barnes Canyon Road San Diego, California 92121 (619) 535-0077</p>	<p>DATE: 8-05-96</p>
	<p>ANGULAR:</p> <p>±5'</p>	<p>THIRD ANGLE PROJECTION</p> <p>DRAWN BY: MAC M</p> <p>APPROVED BY: J BIANCA</p> <p>TITLE: AUTOPIN/2 DETAIL PART DRAWING</p>	<p>DATE: 8-05-96</p>
<p>SCALE: NONE</p>		<p>PART NO: C08-208</p>	<p>SHEET 1 OF 1</p>